



Established 1925

KANSAS GEOLOGICAL SOCIETY

BULLETIN

Volume 87 Number 1

January—February 2012

IN THIS ISSUE

Memorials:

*Warren "Swanee" Johnson
Thomas M. McCaul, Jr.*

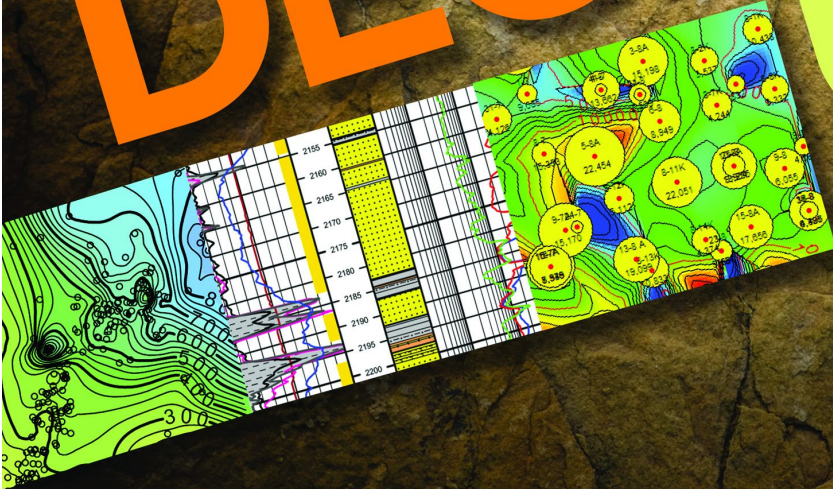
Honorary Member Profile:

Ernie R. Morrision

**Meet the 2012
KGS Board of Directors
Page 18**



FOCUS ON DECISIONS NOT DATA



Why spend valuable time searching for data when you have important decisions to make?

Let TGS focus on the data. With worldwide well data experience and a dedicated customer support team, TGS provides high quality data in the formats you need.

Email WellData@tgsnopec.com to learn more about TGS' well data library that includes production data, directional surveys and the largest online collection of well logs.



Learn more at www.tgsnopec.com/welldata

Table of Contents

Features

List of Theses & Dissertations on Mid-Continent.....	10
Memorials:.....	14
New 2012 Board of Directors.....	18
Honorary Member Profile	19

Departments & Columns:

KGS Tech Talks	4
President's Letter	7
Advertiser's Directory	8
From the Manager.....	9
KGS Board Minutes	16
Professional Directory	23 & 24
Exploration Highlights	26
Kansas Geological Foundation	28
KGF Memorials.....	30

ON THE COVER:

This photo was taken by Tim Pierce several years ago, on an Alaskan cruise. It is showing a glacier breaking away into the water. Thought we needed a nice "icy" photo for the cover of the Bulletin. We will hope that is the only ice we will see this winter!

CALL FOR PAPERS

The Kansas Geological Society Bulletin, which is published bimonthly both in hard-copy and electronic format, seeks short papers dealing with any aspect of Kansas geology, including petroleum geology, studies of producing oil or gas fields, and outcrop or conceptual studies. Maximum printed length of papers is 5 pages as they appear in the Bulletin, including text, references, figures and/or tables, and figure/table captions. Inquiries regarding manuscripts should be sent to Technical Editor Dr. Sal Mazzullo at salvatore.mazzullo@wichita.edu, whose mailing address is Department of Geology, Wichita State University, Wichita, Kansas 67260. Specific guidelines for manuscript submission appear in each issue of the Bulletin, which can also be accessed on-line at the Kansas Geological Society web site at <http://www.kgslibrary.com>

SOCIETY Technical Meetings

Spring 2012 Schedule

Special Event: Jan. 3rd— Showing of the movie “spOILed It’s Time to Fill Up On Truth”, WestWave Films
(We will be showing this DVD at 12:30 PM at the Law Library) - see review on page 10.

Jan. 17—Richard Banks— “Why Don’t the Computer Contours Honor the Data Points?”

Jan. 24—Ray Sorenson— “Natural Gas in the Pre-Drake Era”

Jan. 31—Dr. Tony Walton’s KU Class

Feb. 7—David Koger— “Airphotos and Satellite Data Save Time and Money: Exploration Leads, Field Ops, and Environmental Work”

Feb. 17—Dr. James Aber, Emporia State, “Windscares: Wind Energy in Kansas and Beyond”

Feb. 21—Dr. Mike Taylor, KU— “Dynamics of Orogenic Belts and Continental Plateaus—Examples from the northern Andes and the Himalaya –Tibet orogen”

Feb. 28—David Curtiss, Executive Director of AAPG with Ted Beaumont, President –Elect AAPG

Mar. 6—Dr. Lynn Watney, “Evaluating CO₂-EOR and CO₂ Storage Capacity in Kansas”

Mar. 20—Brian David— “Applications and Benefits of Using Borehole Images in a Horizontal Well; How the Information Obtained Could Be Used To Aid in Well Completions”

Mar. 27—Kurt Rottmann , “Stratigraphic Architecture of the Kinderhookian to Meramecian Series in North Central Oklahoma and Southern Kansas”

Apr. 3—Ft. Hays Geology Students

Apr. 17—Charlie Smith, Halliburton— “A New, Systematic approach to Achieve Effective completions in Horizontal Reservoirs”

Apr. 24—Dr. Jim Puckette’s OSU class

May 15—WSU Students—Larry Richardson’s class

May 22—Bob Workman, “Flint Hills Story (with emphasis on geology)”

May 29—Paul Ramondetta— “Effects of Karstification on Arbuckle Oil Production”

Location for Technical Meetings

*All KGS technical presentations are held at 12:30 p.m. at the **Wichita Bar Association**, located at **225 N. Market**, ground floor conference room, unless otherwise noted.*

Note: For those geologists who need 30 points to renew their licenses, there will be a sign-in sheet at each presentation and also a certificate of attendance.



BOARD OF DIRECTORS

PRESIDENT Kent Scribner	PRESIDENT-ELECT Dave Clothier
SECRETARY Robert Bayer	TREASURER Rocky Milford
DIRECTORS Doug V. Davis Ryan Dixon Tim Hellman	ADVISORS Kent Crisler Dave Goldak

COMMITTEE CHAIRMEN

<u>Advertising</u>	Kent Scribner
<u>Advisory</u>	Kent Crisler Dave Goldak
<u>Annual Banquet</u>	Bob Bayer
<u>Budget Committee</u>	Rocky Milford
<u>Bulletin</u>	Sal Mazzullo
<u>Continuing Education</u>	Robert Cowdery
<u>Distinguished Awards</u>	Doug V. Davis
<u>Directory</u>	Larry Richardson
<u>Environmental</u>	Kent Matson
<u>Field Trip</u>	Larry Skelton
<u>Fishing Tournament</u>	Randy Teter
<u>Future Plans</u>	Ernie Morrison
<u>Golf</u>	David Barker
<u>Historian</u>	Larry Skelton
<u>Investment</u>	Rocky Milford
<u>Library</u>	Roger Martin Ted Jochems
<u>Membership</u>	Larry Friend
<u>Nomenclature</u>	John H. Morrison, III
<u>Picnic</u>	Marjorie Noel
<u>Public Relations</u>	Robert Cowdery
<u>Shooting Tournament</u>	Larry Richardson
<u>Technical Program</u>	Robert Cowdery
<u>Ticket Sales</u>	Bill Shepherd

A.A.P.G. DELEGATES

Ernie Morrison	Robert Cowdery	Doug Davis
2013	2012	2012

BULLETIN STAFF

EDITOR
Sal Mazzullo
salvatore.mazzullo@wichita.edu (316) 978-7211

ADVERTISING
Kent Scribner
Stelbar Oil Corp. (316) 264-8378

PROFILES/MEMORIALS
Robert D. Cowdery
Consultant (316) 267-9030

EXPLORATION HIGHLIGHTS
John H. Morrison, III
Independent O&G (316) 263-8281

STATE SURVEY
Rex Buchanan
KS Geological Survey (785) 864-3965

SOCIETY NEWS
KGS Library (316) 265-8676

EDITOR EMERITUS
Wes Hansen (316) 863-7313

K.G.S. LIBRARY

PHONE 316-265-8676 **FAX** 316-265-1013
email: frontdesk@kgslibrary.com or
Web: www.kgslibrary.com

LIBRARY MANAGER
Rebecca Radford 265-8676
manager@kgslibrary.com

The KGS *Bulletin* is published bi-monthly by the Kansas Geological Society, with offices at 212 North Market, Wichita, Kansas 67202 Copyright 2010, The Kansas Geological Society. The purpose of the *Bulletin* is to keep members informed of the activities of the Society and to encourage the exchange and dissemination of technical information related to the Geological profession. Subscription to the *Bulletin* is by membership in the Kansas Geological Society. Limited permission is hereby given by the KGS to photocopy any material appearing in the KGS *BULLETIN* for the non-commercial purpose of scientific or educational advancement. The KGS, a scientific society, neither adopts nor supports positions of advocacy, we provide this and other forums for the presentation of diverse opinions and positions. Opinions presented in these publications do not reflect official positions of the Society.

**TRILOBITE
TESTING INC**

Eleven Trucks Serving
Kansas - Colorado - Texas
Nebraska - Illinois

Slickline services using the same
Alpine Electronic Pressure
Guages as used on DST's

Back pressure testing (G1 & G2)
DST's

1-800-728-5369

FAX: 1-785-625-5620
trilobite @eaglecom.net

SHOPS LOCATED IN:

Hays, KS

Scott City, KS

Pratt, KS

Hugoton, KS

Clay City, IL



CAN YOU NAME THE CRITTER?

Sponsored by Trilobite Testing, Inc.

Is your paleo up to date?

If you know the name of the trilobite,
submit your guess via e-mail to
manager@kgslibrary.com

Remember that *Trilobite Testing* is
sponsoring your efforts, so be sure to thank
Paul Simpson the next time you see him.

**Come On People....Someone must know
this critter!**

**Bulletin committee members and PhD's in
Paleontology are prohibited from entering.**

KGS Annual Banquet

Friday, January 20, 2012

At the Petroleum Club

9th Floor of the Bank of American Building
Broadway & Douglas, Wichita

This year we will be honoring
Ernie Morrison

Please call the library with your reservations
316-265-8676

President's Letter

Happy New Year!

I am honored to serve as your 2012 President. I learned a great deal serving as Vice President/President-Elect last year under the able leadership of Doug Davis. Hopefully, my term can be as successful as Doug's. We all appreciate that Doug works very hard to assure that Geoscience students and recent Geoscience graduates are given opportunities to interview with area companies for both intern jobs and staff positions.

Dave Goldak and Kent Crisler graciously agreed to be my advisors this year, so I have access to their very extensive experience and sound advice as well as that of our excellent assembly of KGS Board members.

Another very welcome piece of information is that Bob Cowdery is continuing in his position of lining up excellent speakers for our KGS Technical Program series as well as performing other invaluable service for our continuing education. Thank you from all of us, Bob.

I had the pleasure of attending the Mid-Continent AAPG Meeting in Oklahoma City last year, as did many of our other Society members. Great presentations, social events and networking opportunities were continually on hand there. I look forward to our Society hosting the 2013 Mid-Continent AAPG Meeting in Wichita.

The use and profitability of our Robert F. Walters Digital Library grew significantly last year and promises to be an even more successful tool for us this year. Data in the Eastern Ranges of Kansas are being digitized and added to the database. Rebecca Radford, our KGS Library Manager, as well as the capable staff at our Library will continue their outstanding service.

2012 could be one of the most exciting and significant years for our profession in recent memory. I wish all of you great success this year and look forward to serving you to the very best of my ability.

Respectfully,

Kent Scribner



GRADUATE EDUCATION
for active professionals

<i>Through:</i>	<i>Leading to:</i>
Workshops	Academic credits
Field Trips	Certificates (pending)
Distance Education	M.S. degree

With specializations in:
 Petroleum Geology
 Groundwater
 Exploration Geophysics
 Environmental Geochemistry

Information:
 KSU Continuing Education: www.dce.ksu.edu
 KSU Geology Department: www.ksu.edu/geology
 KSU Graduate School: www.ksu.edu/grad
 or e-mail George Clark, interim dept. head: grc@ksu.edu

ADVERTISER'S DIRECTORY

	<i>page</i>
Allied Cementing Company, Inc	25
American Energies Corp.	12
Duke Drilling	25
GeoCare Services AAPG	13
Kansas Geological Foundation	28
Kansas State University	8
Lockhart Geophysical	25
MJ Systems	29
MBC Well logging	25
Murfin Drilling Company, Inc	25
Neuralog	22
PARAGON Geophysical Services, Inc	13
Professional Directory	23-24
Sterling Seismic Services	22
Sunrise Oilfield Supply	25
TGS-NOPEC Geophysical Company	2
Tomcat Drilling	25
TRES Management	12
Trilobite Testing	6
Walters Digital Library	10
Weatherford	31
Well Enhancement Services, LLC	12

ADVERTISER'S RATES: 2012

Full Page	B&W	Color
6 issues	\$2,000	\$2,500
3 issues	\$1,080	\$1,325
1 issue	\$480	\$525
1/2 Page		
6 issues	\$1,000	\$1,500
3 issues	\$540	\$825
1 issue	\$225	\$350
1/4 Page		
6 issues	\$600	\$900
3 issues	\$325	\$525
1 issue	\$150	\$250
1/8 Page		
6 issues	\$300	\$500
3 issues	\$175	\$325
1 issue	\$75	\$185
Professional Ad (Business Card)		
6 issues	\$90	\$180

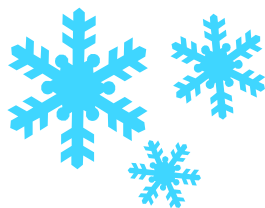
For one-time ads, call Rebecca at 316-265-8676

Mark Your Calendar

The KGS Annual Banquet

Will be

Friday, January 20, 2012



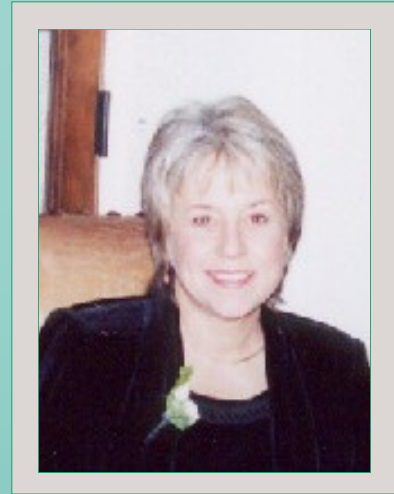
From The Manager

Dear Members,

Happy New Year to all of our members!

We are off to a good start with business continuing to grow, especially the digital library. We are up to 213 members now, getting close to the paper library membership. We have almost fully automated the process of getting the new data on-line, thanks to the hard work of Kurt Look at the Survey.

The staff here in the library is working hard to get East Range data into digital library and we have a couple of students working for the Foundation's Accelerated Integration project, entering unique data that we have from our basement collection of donated data. All in all, we strive to have the best collection of data and make it available to you, our membership.



I hope that you all will come to the **KGS Annual Banquet, Friday, January 20th**. This year we will be inducting Ernie Morrison as an Honorary Member. Ernie is very deserving of this honor. He has served this Society in many ways over the years and continues to do so. Please join us and thank him with this honor.

The Society is sponsoring a **Well Logging & Log Analysis Course** taught by John Doveton. Students can take it for graduate credit by enrolling through Wichita State and others can take it for 15 CEU's. The class will be held at WSU, in the evenings from 6:00 PM—9:00 PM Monday, January 9th—13th. The registration form is on-line on the home page of our web site. You can also call and get registered. The charge for the class will be \$150.00 for those enrolling for the CEU's.

I hope you all have a wonderful and productive year!

Respectfully submitted,

Rebecca Radford

Manager



Let Us Print Your *Geo Reports*
And Save Your Time For Finding More Oil & Gas
Top Quality Color Printing For Our Membership
Email your files to: tammy@kgslibrary.com

The Kansas Geological Society & Library

Movie Review

spOILed

It's Time To Fill Up On Truth

1 hour, 30 minutes

This is a great DVD. It deals with some of the myths that have been propagated by the media, politicians, environmentalists and others concerning the oil industry, need for additional reserves, substitutes for oil etc.

Among other facts presented are: more energy is expended producing ethanol than is obtained, solar and wind which have been proposed as substitutes for oil only produce currently ½ of 1 percent of energy needs, the villain “big oil” which formerly controlled 90 percent of the world’s oil now only controls 7 percent, the rest being under the control of national oil companies etc. Hybrid cars that are proposed as an answer, cost many thousands more than conventional cars to produce. Consumption of hydrocarbons may not be as large a factor in “global warming” as the environmentalists and others would have you believe.

The KGS will be showing this film on Tuesday, January 3, 2012 at the Law Library as one of our technical meetings.

You can learn more at: www.spoiledthemovie.com

2011 UPDATE OF SOUTHERN MID-CONTINENT THESES AND DISSERTATIONS

Neil H. Suneson
Oklahoma Geological Survey

The list below is an update of recently released (as of August 15, 2011) theses and dissertations completed at the University of Oklahoma, Oklahoma State University, and the University of Tulsa (note: bold type is mine). The list also includes unpublished student work on topics of interest to mid-continent explorationists from the University of Arkansas, Fayetteville; the University of Kansas; Kansas State University; Texas Christian University; and the University of Texas, Dallas. Revised search instructions are also given for those individuals who would like to do their own internet search.

University of Tulsa

Revised search instructions: Go to <http://www.utulsa.edu/mcfarlin/> Under Search the Classic Catalog, use dropdown menu under keyword and click on “Subject Heading”. Next to that type in “geosciences”. Click Search. A searchable list of all geosciences theses and dissertations comes up.

Carpenter, Molly Jane S., 2011, A structural analysis of the **Sho-Vel-Tum Field** and correlation to the **Arbuckle Mountains** using balanced cross-sections, Stephens and Carter Counties, Oklahoma. MS.

Braimoh, Kareemot A., 2010, Deepwater, shoalwater, and lagoonal facies in the Silurian Upper **Cochrane Member, Hunton Group**, Chimneyhill Subgroup, **West Carney Hunton Field**, Oklahoma. MS.

Oklahoma State University

Revised search instructions: Go to <http://www.library.okstate.edu/> Under Find Books, click on Catalog (Advanced). Proceed as described in March/April 2010 Shale Shaker. Theses *and dissertations* will come up.

Ali, Hendratta N., 2010, Carbon cycling and stable isotope evolution in neutral mine drainage. Ph.D.

Robert F. Walters Digital Library

The most complete source for Kansas data at your fingertips

no matter where in the world you are!

www.kgslibrary.com

316-265-8676



Search Wells

Section: API Number: County: Operator: Sort: API Number desc

Township: S Lease Name: Depth: Dec. Type: Sort: desc

Range: W Well No.: Spot: 54 found

Spud from: to: mm/dd/yyyy Show me: Paper Digital-Buy Digital-List Search Clear Reset

API No.	County	Sec	Twp	Rgn	Operator	Lease Name	Well No.	Spot	Location	N/S	E/W	Spud	Completion	Depth	EF KB	EF DF	EF GL	Status	
15-03-0022	COMANCHE	04	31S	15W	GULF OIL / SENCLEAR OIL / CARTER OIL	GALLUP-ROBINS	1	...	07 N13	3300 PSL	1960 FEL	10/11/1967	5100	2004					
15-03-0051	COMANCHE	34	31S	15W	MESSEMAN-RINEHART OIL CO	SCHLETTE EST B	1	...	02 S8	440 PSL	1320 FEL	12/05/1960	4900	2001					
15-03-0054	COMANCHE	15	31S	15W	F.K. JOHNSON	ROBINS	1	...	NW N70 E8	2310 PSL	2310 FEL	12/03/1954	5005	2052					
15-03-0059	COMANCHE	23	31S	15W	BARBARA OIL CO	ROBINS UNIT	1	1320 PSL	1320 FEL	06/26/1953	4959	2037					
15-03-0060	COMANCHE	23	31S	15W	BARBARA OIL CO	ROBINS B	1	1320 PSL	1320 FEL	07/03/1953	5465	2042					
15-03-0061	COMANCHE	34	31S	15W	BARBARA OIL CO	ROBINS	1	1320 PSL	1320 FEL	02/27/1953	4930	2006					
15-03-00113	COMANCHE	36	31S	15W	INTER-SEA SERVICE	SHAW	1	4200 PSL	2970 FEL								
15-03-10001	COMANCHE	14	31S	15W	BARBARA OIL CO														
15-03-10002	COMANCHE	38	31S	15W	BARBARA OIL CO														

Preview | Robert F. Walters Digital Geological Library - Mozilla Firefox

http://www.kgslibrary.com/library/preview.cfm?image_id=1015746

BARBARA OIL COMPANY
Home Office: Great Bend, Kansas
P. O. Box 593 Gladstone 5-3000

COMPANY: Barbara Oil Company
DATE: 8-1-58
TEST NO.: #2 TICKET NO.: 9511-K TYPE: TEST TEST APPROVED BY: Allen E. Bowman WESTERN REP

TEST DATA:
Trend From 4880' To 1910'
Hydrostatic Mud Pressure—Initial (A) 2650#
Flow Pressure—Initial (B) 0
Bottom Hole Pressure—Initial (F) 1660#
Tool Open. — Hr. 30 Min; Shut-in-Initial — Hr. 30 Min
Chokes: Surface 5/8" Bottom open Fluid Cushion: Type: Recovery: 100% Gas cut mud.

SURFACE DATA:
BLOW: Good blow with gas to surface in 400'.

COMANCHE COUNTY
FIELD NO. 10-315-16W
WELL NO. 10-315-16W
COMPANY: BARBARA OIL COMPANY
WELL: 10-315-16W
RESERVE LIFE NO. 1
FIELD: GLICK
LOCATION: SEC. 10-315-16W
COUNTY: COMANCHE
STATE: KANSAS
TILING NO. 11, 000, 000
Division: P. O. Box 593 Gladstone, Kansas 67530

LATEROLOG SURVEY
SHELLERBARGER WELL SURVEYING CORPORATION

REMARKS: LATEROLOGS 3 - 4" = 400' FC = 2" LATEROLOG 7 - 16" = 2.5"

Check It Out: Log in as a guest - username = guest, password = guest

WOULD YOU LIKE TO INCREASE YOUR PRODUCTION AT A FRACTION OF THE COST OF HORIZONTAL DRILLING?



Well Enhancement Services, LLC is jetting laterals utilizing new technology and coiled tubing. We now have the ability to place hundreds of gallons of acid hundreds of feet away from the well bore. This allows us to not only enhance existing production but to produce reserves previously unreachable. It has established itself by repeatedly increasing production in both new and existing wells. Contact us for more information, questions or to schedule your next well with **WES**.



“Tap into success.....with WES”

Please Contact Us:

Phone: (785) 625-5155

Fax: (785) 625-4151

Field: (785) 259-4638

wesofhays@hotmail.com
Box 87, Schoenchen, KS 67667



MANAGEMENT INC.

7011 North Robinson
Oklahoma City, OK 73116

405-842-7888 Phone • 405-842-7885 Fax

www.tresmanagement.com
Email: tres@tresmanagement.com

Providing engineering, planning, and site supervision services for all phases of the oil & gas operations:
Drilling, completion, workover, and facilities

Current activity includes providing engineering and supervision on horizontal projects in the Mid-Continent, Rocky Mountain, and Gulf Coast regions.

WANTED



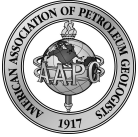
LOW BTU GAS to Buy or Treat

www.NitrogenRejectionUnit.com



American Energies Corporation

316-263-5785



Security for AAPG Members
& Their Families
Through Group Insurance

Life
Health
Dental
Disability
Auto and Homeowner
Supplemental Plans

AAPG's
GeoCare Benefits Insurance Program
P. O. Box 189
Santa Barbara, CA 93102-0819
800-337-3140
E-mail: geocarebenefits@agia.com
www.geocarebenefits.com

Kansas Geological Foundation Video / DVD Collection

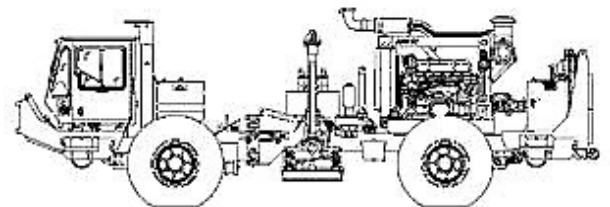
The KGF has an extensive collection
of videos available for check-out
at no charge.
Only pay for shipping back.

These are ideal for classroom or
general public viewing.

See the web for
titles & descriptions
www.kgfoundation.org

Call 316-265-8676
Ask for Janice to check out videos

Your Ad Would Look
Good Here!



~The TOP CHOICE for 3D SEISMIC~

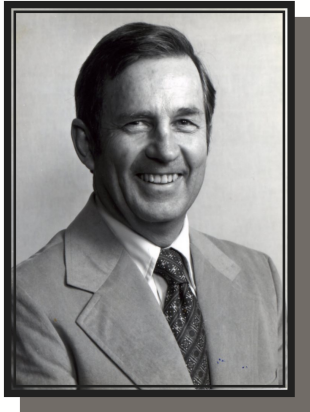
John H Beury III ~ Pres John Aguilar ~ Op. Mgr.

PHONE (316) 636 - 5552 FAX (316) 636 - 5572

3500 N. Rock Rd., Bldg 800, Suite B
Wichita, KS 67226

paragon@paragongeo.com

Memorials



Warren "Swanee" Johnson

The profession and industry lost one of its most respected members with the passing of "Swanee" Johnson. He was born in Ellinwood in 1921 and spent a good share of his life there. His parents were Edward Johnson and Della Unruh. Swanee had three brothers, Ed and Jim now deceased and Vance who lives in San Diego.

He attended grade school thru high School in Ellinwood. During World War II, he was a member of the Army Air Corps. After the war he attended Colorado School of Mines, graduating in 1949. In 1948, he married Helen Dowdy in Phoenix, Arizona and to this union were born two sons and a daughter: Wade and Denise Johnson reside in Reno Nevada, Mark Johnson lives in San Jose, California and his daughter Jan and her husband, are in Topeka. He also had a Cypriot Exchange student son, Tomas Constaniinides. The family includes five grandchildren and three great grandchildren. His wife, Helen died in 2009.

Swanee was active in a number of organizations, KIOGA, Kansas Geological Society, Rotary Club and he was a member of Immanuel United Church of Christ where services were held in June.

The designated memorials are the church or the Rotary Club of Ellinwood.



Thomas M. McCaul, Jr.

With the passing of Tom McCaul, the Kansas Geological Society lost a former member of at least 48 years. Tom was born on August 1, 1919 in Kansas City, Missouri. He graduated from Friends University in Wichita with a business degree and from Wichita University with a degree in geology. During his college years, Tom was an excellent athlete playing basketball and baseball in college. He lived his dream with a short term in baseball's minor league before returning to business. Tom served his country with pride during World War II as a Captain in the Marine Corp which included a period in the South Pacific.

He was an intuitive businessman starting several companies in Kansas before ultimately staying with his love for the earth starting Sage Drilling and Circle Oil where he stayed as CEO until his retirement. Tom loved golfing and traveling with the love of his life, Carolyn McCaul. Tom was blessed with a daughter, Melinda, and a favorite nephew, Dr. Britt Buckley. A very small, private service was held at Pikes Peak Hospice. Contributions are welcomed by Pikes Peak Hospice at 2222 N. Nevada, Colorado Springs, CO 80907.



Baker, Courteney B., 2010, Deciphering the evolution history of the Salihli and Turgutlu granites, Menderes Massif, western Turkey using the electron microprobe, ion microprobe and cathodoluminescence. MS.

Siddique, Monjur R., 2010, Depositional facies and reservoir quality, Devonian carbonate mounds, **Frisco Formation**, Oklahoma. MS.

Silvertooth, Maggie L., 2010, Monitoring active volcanism using ASTER satellite remote sensing, Volcan de Colima, Colima, Mexico. MS.

University of Oklahoma

Elis, Yavuz O., 2011, Effect of prestack processing flows on acquisition footprint as seen on geometric attributes: the **Red Fork Formation** case study. MS.

Heape, Austin S., 2011, Tectono-stratigraphic analysis of the Oil Creek and Davis sandstones in Sherman – **Marietta Basin**, Grayson County, Texas. MS.

Hulsey, Katie M., 2011, Lithofacies characterization and sequence stratigraphic framework for some gas-bearing shales within the Horn River Basin, northeastern British Columbia. MS.

Schlichtemeier, Brett D., 2011, LIDAR characterization and reservoir modeling of an Upper Jackfork Group basin floor fan deposit at Degray Spillway, Caddo Valley, Arkansas. MS.

Staples, Evan R., 2011, Subsurface and experimental analyses of fractures and curvature. MS.

Urazimanova, Aliya M., 2011, Rock strength determination in shale caprock through inversion of 3D seismic in the Forties Field, UK. MS.

Worthington, Christine M., 2011, An integrated geophysical analysis of the External Pre-Rif domain, Morocco. MS.

Yilmaz, Hulya, 2011, 3D basin model of the Serbian Banat region of the Pannonian Basin, Serbia. MS.

Angelo, Spuikinene M., 2010, Integrated seismic texture segmentation and clustering analysis to improved delineation of reservoir geometry. MS.

Baker, Charles G., 2010, Carnassial-like notches in the lower molars of bats (mammalia : Chiroptera). MS.

Barber, Rachel A., 2010, Attribute delineation of karst and channels: calibration via acoustic impedance. MS.

Batista, Ana M., 2010, Evaluation of 3D seismic attributes and post stack inversion methods: Pennsylvanian **Granite Wash** reservoir characterization case study, Texas. MS.

Bose, Shamik, 2010, Transfer zones in listric normal fault systems. PhD.

Burr, Rika R., 2010, An integrated geophysical analysis of the Klamath Mountain Province, northern California and southern Oregon. MS.

Fisk, Jeremy C., 2010, Correlating deliverability to seismic attributes in coalbed-methane exploitation. MS.

Funk, Jonathan E., 2010, Quantifying connectivity between deep-water channel sandstones and stratigraphically adjacent architectural elements. MS.

Gonzalez Canro, Angel A., 2010, Application of cluster analysis to facies identification and correlation in the **Barnett Shale**, Johnson County, Fort Worth Basin, Texas. MS.

Guo, Yanxia, 2010, Seismic attributes illumination of the **Woodford Shale, Arkoma Basin**, Oklahoma. MS.

Guzmán Rivera, Juan G., 2010, Depositional history and sequence stratigraphic framework of the **Upper Red Fork sandstone** in the deeper part of the **Anadarko Basin** in Caddo and Washita Counties, Oklahoma. MS.

Hathaway, Kevin R., 2010, Assessing eolian influx to an arid Middle Pennsylvanian carbonate ramp, Kananaskis Formation, Alberta. MS.

Kansas Geological Society Board Minutes

Kansas Geological Society Board Minutes Condensed version for Bulletin

November 8, 2011 Mr. Doug Davis called the meeting to order at 11:36 a.m.

FINANCIAL REPORT/MANAGERS REPORT

- A. **Treasurer's Report-** Mrs. Noel presented us with the Treasurer's report for October 2011. The earliest a CD will be maturing is December 22, 2011 at Kanza State Bank. *Mr. Scribner moved to accept the Treasurer's report as presented. Mr. Dean seconded the motion and the motion passed unanimously.*
- B. **Manager's Report-** Mrs. Radford presented the Manager's Report for October 2011. Mrs. Radford noted that a record amount for a month in downloads was set for the WDL. The reports show 738 Society members, 279 Library members and 210 Walters Digital Library members.

OLD BUSINESS

- A. **AAPG Mid-Continent Meeting Report** – Alan DeGood & Doug Davis are Co-Chairman for the meeting and are looking for volunteers and chairman for the various committees and ideas for speakers and field trips. The meeting will be at the Airport Hilton on September 7-10, 2013. The theme of the meeting will be "New Technology Integration - Mature Petroleum Regions"
- B. **KGS 2012 Budget Committee** – The 2012 Budget was presented to the Board after a review by the Budget Committee. Motions to amend the budget were made and passed. *Mr. Dean motioned to accept the amended KGS 2012 Budget and the motion passed.*

NEW BUSINESS

- A. **KGS Annual Business Meeting** – date set for Dec. 20th, following the Tech. Talk
- B. **Continuing Education** – John Doveton, with the Kansas Geological Survey, will teach an Electrical Logging course at WSU on January 9-13, 2012, from 6:00-9:00 pm. The course may be taken for college credit or Continuing Education Credit. Mr. Davis will contact WSU about class fee for a non-college credit attendee.
- C. **WSU Geology Club Donation** – members from the club have requested a donation to help fund products to sell for fundraising. Mrs. Noel motioned for \$300 to be donated to the WSU Geology Club. Mr. Dean seconded the motion and the motion passed.

Respectfully submitted, Robert Milford, Secretary

December 13, 2011 Mr. Doug Davis called the meeting to order at 11:43 A.M.

PRESIDENT'S STATEMENT- Mr. Davis welcomed new 2012 Board members, President-Elect Dave Clothier, Secretary Bob Bayer and Director Tim Hellman. Mr. Davis then led a toast to the outgoing Board members, Director (Past President) Rick Saenger, Director Ken Dean and Treasurer Marjorie Noel and thanked them for their service over the past year.

FINANCIAL REPORT/MANAGERS REPORT

- A. **Treasurer's Report-** Mrs. Noel presented the Treasurer's report for November 2011. She stated that the CD at Kanza State Bank is due to mature on December 22. Several banks were contacted to find the best CD rate in the area and it was decided by the Board that Andover State Bank still had the best rate at 1.20% and it would be for 2 years. *Mr. Saenger moved to accept the Treasurer's report as presented. Mr. Dean seconded the motion and the motion passed unanimously.*
- B. **Manager's Report-** Mrs. Radford presented the Manager's Report for November 2011. Monthly income of the paper library and the WDL combined was \$86,813.60 and expenses were \$55,230.77, making a profit of \$31,582.83. Mrs. Radford noted that the WDL had another record-setting month with downloads totaling over \$9000. The Society has 743 members, the Library has 298 members and WDL has 213 members.

OLD BUSINESS

- A. **John Doveton's Class-** John Doveton is offering an evening well-logging class at WSU January 9-13, 2012. Registration fees, for those NOT registering through WSU for college credit, will be \$150. Professionals taking the class will receive 15 continuing education credits.

NEW BUSINESS

- A. **Ag-News-** Ag-News contacted Mrs. Radford and would like the KGS to advertise in it's paper. They would also like an article on well completion practices, in which, Mr. DeGood suggested that Mrs. Radford contact Mr. Ed Cross at KIOGA about possibly writing the article.
- B. **"Members Only" Page-** Mr. Orvie Howell suggests that we put the entire membership of the KGS website with contact information and pictures. The idea is to create a "Members Only" page, which has been brought up at past Board meetings.

Respectfully submitted, Marjorie Noel, Treasurer, acting Secretary for the December 2011 meeting

You Can Now Log Into the Walters Digital Library without belonging
Use guest / guest for username & password
This will allow you to see what's in our database
You won't be able to download of course but you can see if we have what you are looking for.
You might find this helpful when placing an order with the KGS Paper Library.
www.kgslibrary.com

**Robert F. Walters
Digital Geological Library**
Version 1.1

Stitched TIFF images are now legible in Petra

Well Logging and Log Analysis Course

By John Doveton

**This class will be held at Wichita State University
(Exact location to be announced at later date)**

From 6:00 PM—9:00 PM January 9th—13th, 2012

Cost for continuing education credits: \$150.00 (worth 15 CEU's)

The course will be listed as GEOL 690 for 2 credit hours as a pre-session class for WSU students, but will also be jointly sponsored by the Kansas Geological Society as a Continuing Education offering for the membership.

The course will review the logistics of logging operations and how to read both common and “exotic” logs run in Kansas. All log examples will be drawn from the Kansas subsurface as case studies that integrate core, DST, and production information. Log analysis techniques for estimation of porosity and water saturation, as well as interpretation of likely fluid recovery (volume and water-cut) will be presented and demonstrated. Course exercises will be given for solution either by hand-calculator or EXCEL spreadsheet on the participant’s laptop. Useful online information and log sources (scans and LAS files) from the Kansas Geological Survey and Kansas Geological Society websites will be reviewed. A course manual will be provided together with example LAS files and a freeware log analysis EXCEL workbook.

Call 316-265-8676 or get registration form on-line at www.kgslibrary.com

KGS Board of Directors 2012



Kent Scribner –President



Dave Clothier—President-Elect



**Robert “Rocky” Milford
Treasurer**



Bob Bayer-Secretary



**Timothy Hellman
Director**

Photo: AJ

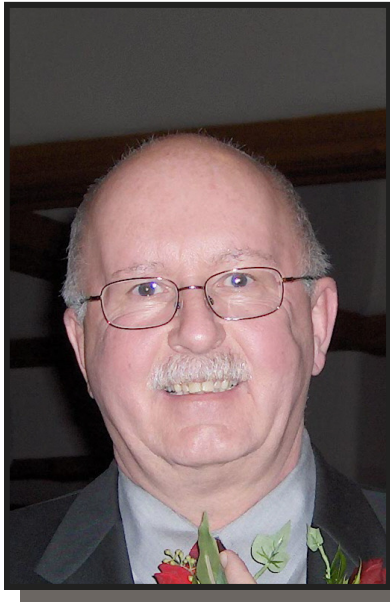


**Ryan Dixon
Director**



**Doug Davis
Director**

Honorary Member Profile *Ernest R. Morrison*



It is readily apparent that anyone would be hard pressed to find a member more deserving of honorary membership than Ernie Morrison. Ernie has contributed so much to the KGS, the profession, and industry that it will be difficult to fully encompass his activities in such a short article as this.

Ernie commenced his life's journey in 1947 in Minneapolis, Minnesota in December of 1947. Members of his immediate family include a brother in St. Louis, also a geologist and two sisters residing in Texas. He attended grade school in Minneapolis, middle school in Brainerd, Minnesota, and high school in St. Francis, Minnesota.

Following high school, Ernie served from 1967 until 1969 in the United States Navy. This service included time at the Great Lakes training base, Little Creek, Virginia, My-Tho Viet Nam and aboard a destroyer. He received an Honorable Discharge. After his discharge he journeyed to Amarillo, Texas where he was employed by Bell Helicopter until he left to commence his higher education full time.

In 1970, he married Pat Miller in Amarillo and they have two sons: Robert in Minneapolis, and John in Derby, Kansas. They now have three grandchildren.

In 1973 he received an Associate Science Degree from Amarillo Jr. College, then a B.S. degree in Geology from West Texas State in 1975, followed by an M.S. degree from the same institution in 1979. Twenty years later he pursued and received a B.S. degree in Business from Tabor College, Wichita campus in 1999. During the educational process, Ernie believes that well known geologist/professor George Asquith influenced his career to the greatest extent. After college, Ernie names Dick Ross with Coastal as having the greatest influence.

Tracking his professional career is almost overwhelming. It began with employment by Exploration Logging of U.S.A. from May, 1975 – August 1976. Ernie worked as a “mud logger” and received experience in Kansas and Oklahoma. For a period from August 1976 until November 1976 while a graduate student at West Texas at West Texas he was a geologic lab assistant. From November 1976 until April 1979 he was employed by Colorado Interstate Gas Exploration Company. His career from April 1979 until September 1984 was with Imperial Oil and Gas, Inc. For one year from October 1984 until October 1985 he was employed by Sunwest Exploration Company. After Sunwest went out of business, Ernie was consulting geologist from October 1985 – until April 1994. He was employed by Hugoton Energy Corp (now Chesapeake) from April 1994 until July 1998. After Chesapeake closed their office in Wichita Ernie was a consultant for a short period. He then worked on a project for the Kansas Geological Survey studying the Hugoton Gas Field. From September 2000 until February 2003 he was an exploitation geologist for Murfin Drilling. Since leaving Murfin he has been an exploration geologist in a very active program with Mull Drilling.

During all of this very active career he has found time to be active in a large number of professional societies. He is a member of the American Association of Petroleum Geologists and is currently the President of the Mid-Continent Section of that organization and also a delegate to the House of Delegates representing the Kansas Geological Society. He has served the KGS as Treasurer-Secretary, Vice-President, and President. He has served on many committees including: Picnic, Annual Banquet, and Future Plans (where he continues to serve).

Other activities, in which Ernie is involved, include hunting, fishing, and giving “rock talks” at schools. He also has continued his education after college by attending 21 schools, seminars, and symposiums etc. between 1973 and 2000. Of particular note, is the fact that he often teaches an entry-level geology course at Cowley County Jr. College.

This is truly a remarkable career and a very busy one, but Ernie also has been a close and a very great friend to many of his fellow geologists.

Humphries-Betzner, Brandy J., 2010, Systematics of Morganucodon (Morganucodontidae, mammaliaformes) from the Pant Quarry (Early Jurassic), Wales, UK. MS.

Jensen, Bryce E., 2010, Regional investigation of crustal structure using integration of seismic and potential field data, Northern Rockies/Great Plain region. MS.

Liceras, Veronica, 2010, Outcrop-based 3D modeling and flow simulation of the **Jackfork Group** turbidites in Hollywood Quarry, Arkansas. MS.

Munasinghe, Prinit S., 2010, Precipitation of uranyl phosphate influenced by mineral surfaces. MS.

Pack, Jessica M., 2010, Paleoclimatic implications of the depositional setting and origin of sediments in the **Wellington Formation**, Kay County, Oklahoma. MS.

Paul, Debapriya, 2010, Controls on the geometry of basement faults on foreland basement-involved structures. MS.

Pena Marino, Victor D., 2010, Integrated geophysical investigation of shallow igneous bodies and the impact on seismic data quality, Chicontepec Basin, Mexico. MS.

Refunjol Chirinos, Xavier E., 2010, Hydraulically-induced microseismic fracture characterization from surface seismic attributes and seismic inversion: a north Texas **Barnett Shale** case study. MS.

Tarkington, Jarred Z., 2010, Sequence stratigraphy and petroleum geology of a **Booch** incised valley fill sandstone deposit in eastern Oklahoma. MS.

Thompson, Amanda M., 2010, Induced fracture detection in the **Barnett Shale**, Ft. Worth Basin, Texas. MS.

Wente, Garin B., 2010, Study of the **Atoka** reservoir in the **Putnam Atoka Field**, southwestern Dewey County, Oklahoma. MS.

Zhang, Kui, 2010, Seismic attribute analysis of unconventional reservoirs and stratigraphic patterns. Ph.D.

Zou, Fuge, 2010, An integrated approach to characterization and modeling of the **Jackfork Group** at the Baumgartner Quarry area, western Arkansas, and its implications to deepwater exploration and production. MS.

University of Arkansas, Fayetteville

Revised search instructions: Go to <http://libinfo.uark.edu> Click on gray tab near top labeled "Books". Click red underlined link to full "Library Catalog." Proceed as before after clicking on tab labeled "Advanced."

Kreman, Drew M., 2011, Characterization of Kinderhookian and Osagean strata of northeast Oklahoma. MS.

Welcome, Leiaka T., 2011, Stratigraphic evidence indicating syndepositional faulting along the Cass Fault system in the southern Ozarks, northwest Arkansas. MS.

Allen, Daniel E., 2010, A comparative petrographic study of three Upper Mississippian (Chesterian) sandstones in northern Arkansas. MS.

Lynch, Joshua M., 2010, Upper Atoka (Pennsylvanian) tidal system along the Backbone Anticline, Arkoma Basin, Sebastian County, Arkansas. MS.

University of Kansas

Revised search instructions: Must go through ProQuest, which requires access to university library resources and university ID number.

Young, E.M., 2010, Controls on reservoir character in carbonate-chert strata, Mississippian (Osagean – Meramecian), southeast Kansas. MS.

Mayer, L.M., 2009, Increasing reflection coherency through improved static corrections: an iterative tomographic approach. MS.

Kansas State University

Evans, Drew W., 2011, The compartmentalization and biomarker analysis of the Spivey – Grabs – Basil Field, south-central Kansas. MS.

Hill, Tyler J., 2011, Potential source rocks in the western Kansas petroleum province. MS.

Philip, Charlotte C., 2011, 3D seismic attributes analysis to outline channel facies and reveal heterogeneous reservoir stratigraphy, Weirman Field, Ness County, Kansas, USA. MS.

Abbas, Mazin Y., 2009, Incorporating seismic attribute variation into the pre-well placement workflow, a case study from Ness County, Kansas, USA. MS.

Al-Hashim, Mansour H., 2009, Comparing the tidally influenced facies in the Tonganoxie sandstone in northeastern Kansas with modern analogs from Turnagain Arm of Cook Inlet, Alaska, USA. MS.

Texas Christian University

Revised search instructions: Go to <http://www.library.tcu.edu/> Under Research and Tools on the left, click on “More” and then click on “Advanced library catalog search”. Under “Format”, use the dropdown menu and click on “TCU theses and dissertations”. Above that next to the top “Words anywhere” enter geology. Click on Search.

Elasmar, Maher M., 2011, Geologic mapping and fracture analysis of the northeastern Rosillos Mountains, Brewster County, Texas. MS.

Herrmann, Benjamin C., 2011, Impact at Ingalls?: evidence for a subsurface Ordovician meteorite impacts near Ingalls, Oklahoma. MS.

Enderlin, Milton B., 2010, A method for evaluating the effects of stresses and rock strength on fluid flow along the surfaces of mechanical discontinuities in low permeability rocks. MS.

Garber, Nicole S., 2010, Origin and distribution of reservoir facies in the Shattuck Member (Queen Formation, Permian), southeastern New Mexico. MS.

Patterson, Amy A., 2010, Structural geology and hydrocarbon production, **Barnett Shale** (Mississippian), Fort Worth Basin, northwestern Johnson County, Texas. MS.

University of Texas at Dallas, Richardson

Revised search instructions: Go to <http://www.utdallas.edu/library/> Click on the large green button on the right labeled “Find Books, Journals, Videos/DVDs, etc.” In the Advanced Search window, next to the word “Search”, enter geology. All boxes are now labeled “Search” rather than “Find This” as before. Proceed as previously described.

White, Lionel S., Jr., 2010, The development of computer algorithms for the construction and analysis of photorealistic 3D virtual models of geological outcrops. MS.

Deans, John D., 2009, Simultaneous inversion of seismic data from a Wolfcampian limestone reservoir of the eastern shelf. MS.

Special Note: Thank you to the OCGS and Shale Shaker for sharing this article with the Kansas Geological Society



Experience, Integrity, Innovation...



SEISMIC SERVICES, LTD.

www.sterlingseismic.com

**Renegade Seismic Studio Refraction Statics
Z-White Spectral Enhancement
Tsunami Pre-Stack Time Migration**

Projects from one square mile "Postage Stamp" 3Ds to the 1,100 square mile nine 3D merge through PSTM we completed in 2006, no project is too small or too big. All projects are given the same attention to detail that we have become known for.

**Structural or stratigraphic, we've got the experience
to provide you with a superior dataset.**



303-347-9011

Reliable Log Printing

Neuralog provides purpose-built well log printing solutions. Setting the standard for reliability and efficiency in the industry; automatically load, print top of form, cut and stack every log. Included NeuraViewPE provides viewing, editing and printing of industry standard log formats. A demo will show you why companies all over the world have chosen Neuralog.



NeuraLaserColor

- Automated paper handling
- Top of form log prints
- NeuraViewPE included
- One year warranty included
- Unsurpassed support



NeuraJet17

Neuralog

Turning Paper Into Petroleum

© 2011 • Neuralog • www.neuralog.com • 1.281.240.2525 • 1.800.364.8728

www.Neuralog.com



PROFESSIONAL DIRECTORY

Kirk Rundle
Consulting Geophysicist
 3D Seismic Design, Acquisition to Processing QC,
 Interpretation and Analysis, Subsurface Integration
 7340 W. 21st. N., Ste. 100
 Wichita, Kansas 67205
 Office: 316-721-1421 Fax: 316-721-1843
 Email: kirk@rundlegeo.com

ROGER L. MARTIN
Independent Petroleum Geologist
 200 E 1st St, Ste 405, Wichita, KS 67202
 Office 316-833-2722 Cell: 316-250-6970
 KS Field Cell: 316-655-1227
 Fax: 316-425-3829
 Email: rogermartingeo@yahoo.com


GeoCertified, LLC
 Professional Geological Services
 Hydrocarbon Detectors and Geologist Onsite 24/7
 Phone: (913) 441-2311 • Cell: (913) 544-7527
 www.geocertified.com

ALFRED JAMES III
Petroleum Geologist
 Kansas - Colorado - Utah
 200 W. Douglas, Ste. 525, Wichita, Kansas 67202
 SIPES # 1111
 Office (316) 267-7592
 alfred.james55@yahoo.com

Tel.: (972) 712-9036
 Fax: (972) 712-0258
 Cell: (214) 223-1784

LANG J. FUQUA
Certified Petroleum Geologist


 4201 Tanglewood Ln.
 Frisco, Texas 75035

M. Bradford Rine
Honorary Life Member—Kansas Geological Society

 Licensed Geologist—KS. #204
 Registered Professional Geologist—Wyo. # 189
 Certified Geologist—A.A.P.G. # 2647
 S.I.P.E.S. # 1584 S.P.E. #109833-4
 PROSPECT EVALUATION • PROSPECT GENERATION
 WELLSITE SUPERVISION • EXPERT TESTIMONY • OPERATIONS
 PROPERTY EVALUATION • RESERVOIR STUDIES
 DRLG./COMP. CONSULTATION
 Suite 415 Office: (316) 262-5418
 100 S. Main Fax: (316) 264-1328
 Wichita, KS 67202 Cell: (316) 250-5941

WESLEY D. HANSEN
Consulting Geologist
 Well site Supervision
 Geologic Studies
 212 N. Market, Ste 257
 Wichita, Kansas 67202
 Off: (316) 263-7313
 Mobile: (316) 772-6188


 Paul Gunzelman
 President/Geologist
 Wichita, Kansas 316.634.6026
 email p.gun@sbcglobal.net


KEVIN L. KESSLER
 INDEPENDENT/CONSULTING PETROLEUM GEOLOGIST
 WELLSITE SUPERVISION • GEOLOGIC RESEARCH
 OIL & GAS PROSPECTS
 KANSAS & EASTERN COLORADO
 MAILING ADDRESS PHONE
 1199 N. PONDEROSA RD. RES.: (316) 522-7338
 BELLE PLAINE, KS 67013 MOBILE: (316) 706-6636
 EMAIL: KKESSLER1199@AOL.COM

ROBERT J. GUTRU
Geologist
 300 Farmers & Bankers Bldg.
 200 East First Street
 Wichita, Kansas 67202
 Off: (316) 265-3402

KGJ ENTERPRISES
 Contract Oil & Gas Accounting &
 Office Management

 Kathryn G. James, MBA (316) 775-0954
 4278 SW 100th ST. (316) 250-5989
 Augusta, KS 67010 kgjames@onemain.com

MELLAND ENGINEERING, INC.
Petroleum Engineering & Geological Consulting
James E. Melland, P.E., P.G.
 President
 Office: (620) 241-4621 Fax: (620) 241-2621
 jamesm@mellandengineering.com
 www.mellandengineering.com
 P.O. Box 841, McPherson, KS 67460

Blue Ribbon Drilling, LLC

PO Box 279, Dewey, OK 74029

Phone and Fax: 918-534-2322

John's Cell Phone: 918-440-9639

Larry's Cell Phone: 918-440-9638

Jeff's Cell Phone: 918-440-9647

Email: johnroutree@bratco-operating.com

PLAINSMEN LAND LLC

Cash available for lease acquisition
Supporting Oil & Gas Prospects

Dan Earl Duggan

817.347.9300

danearl@dxwells.com

Steve Meese

405.820.2442

smeese3105@yahoo.com



Geotech & Design Services

7171 Highway 6 North, #202

Houston, Texas 77095

Data digitizing, drafting & computer graphics

Tel: (281) 858-7100

Fax: (281) 500-8534

heather.wilson@geotechmap.net

Heather Wilson

Account Manager

www.geotechmap.net



Happy New Year!

**We Invite You
To join**

*Kansas
Geological
Foundation*

*\$50.00 membership is
tax deductible*

Call 316-265-8676

*Or send checks to:
Kansas Geological Foundation
212 N. Market, Ste. 100
Wichita, KS 67202*

The Following Are For Sale

The Kansas Geological Foundation is offering electric logs on microfiche for sale. This data is from 9 western states. The microfiche will be sold as is, in bulk, by state (no cherry picking). Prices are proportionate to the number of fiche available.

Prices are firm, you haul or pay shipping

Utah (~20,000 logs) - \$200.00

Colorado—\$25.00

S. Dakota—\$50.00

New Mexico—\$50.00

Idaho—\$25.00

Arizona—\$25.00

Oklahoma—\$25.00

**WE ALSO HAVE SOME CARD FILE SETS AND
OUT OF STATE DATA COMING AVAILABLE.**

**CALL FOR MORE
INFORMATION**

316-265-8676

WESTERN KANSAS
SOUTHERN NEBRASKA



EASTERN COLORADO
OKLAHOMA & TEXAS PANHANDLES

10 Drilling Rigs

10 Well Service Rigs & Roustabout Services

For contract information, please contact:
Blaine Miller / Drilling Department
316-858-8607 (Direct) or 316-267-3241

For contract information, please contact:
Alan Hays, Well Service Sprvsr.
785-421-2103 or 785-567-8739 (cell)

250 N. Water #300—Wichita, KS 67202

East Highway 24—Hill City, KS 67642

DUKE

DRILLING COMPANY



ROTARY DRILLING CONTRACTOR

620 Hubbard PO Box 823
Great Bend, KS 67530
Phone 620-793-8366

100 S. Main, Ste. 410
Wichita, KS 67202
Phone 316-267-1331
Fax 316-267-5180



Tomcat Drilling

3 Rotary Rigs - Rotary Drilling Contractor
Southwest Kansas • Oklahoma & Texas Panhandles

Tim Sanders 316-262-8554 phone
316-259-1652 Cell
tjsanders@tomcat.kscoxmail.com

100 S. Main, Suite 508
Wichita, KS 67202

Great Bend (620) 793-5861 Ness City (785) 798-3843 Medicine Lodge (620) 886-5926



Acidizing Available at Medicine Lodge District

Russell (785) 483-2627 Oakley (785) 672-3452

Lockhart Geophysical Company

Call (303) 592-5220 FAX (303) 592-5225
Or E-mail lockden@xpert.net

2D & 3D Seismic Acquisition
Vibroseis Specialists




JAPEX GDAPS-4 Distributed System

We'll give you seismic excellence

MBC

WELL LOGGING & LEASING
UNMANNED GAS DETECTORS
MUD LOGGING
CERTIFIED INSTRUMENT TECH
SERVING THE KAN-O-TEC AREA SINCE 1990

AUSTIN GARNER MARLA GARNER
24-HOUR PHONE (620) 873-2953
MEADE, KANSAS



STORES

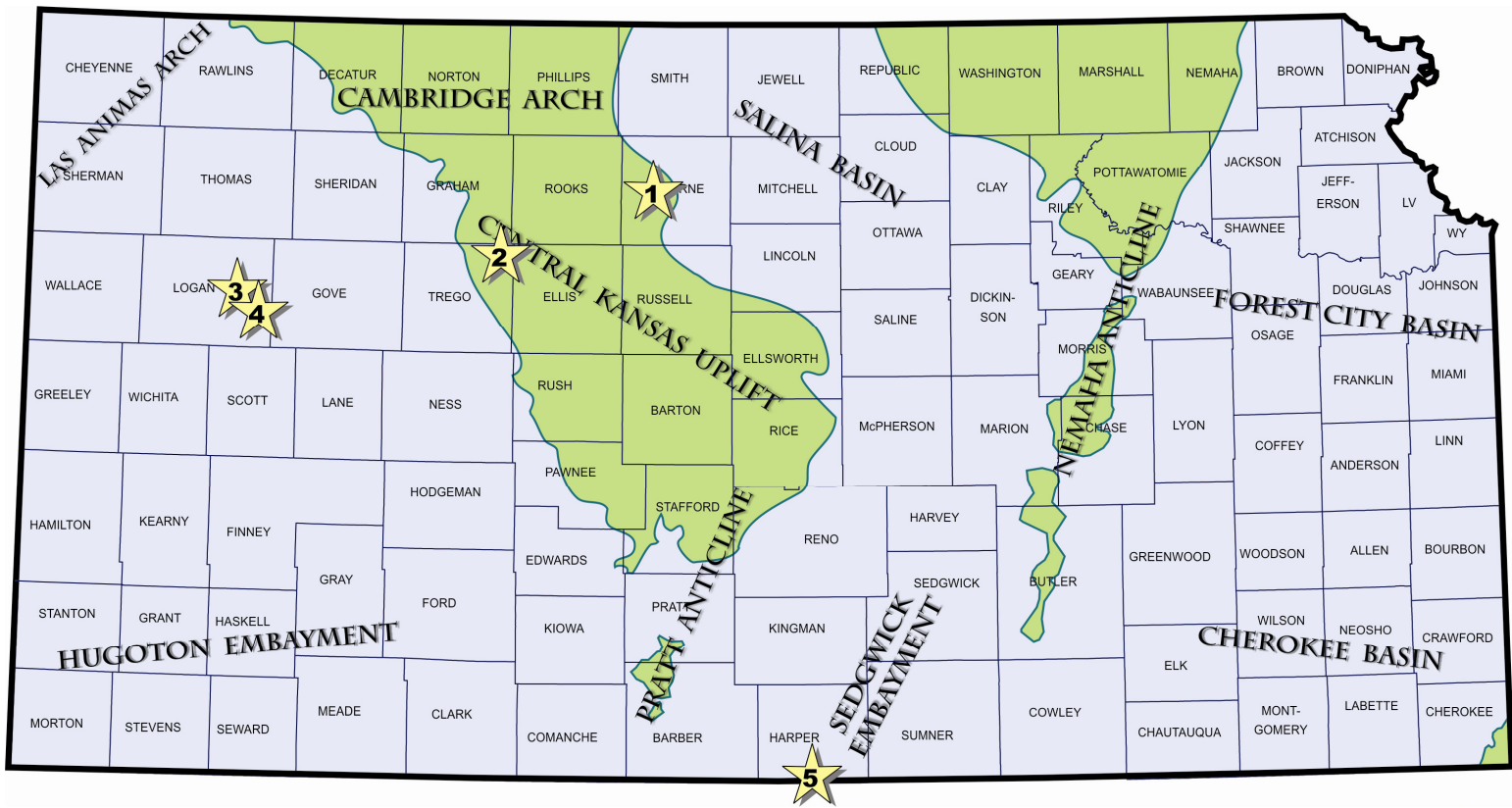
Ness City, KS 800-589-5733
El Dorado, KS 316-321-9323
Garden City, KS 877-976-1700
Spivey, KS 316-532-5261
McCook, NE 308-345-1542

FULL LINE SUPPLY STORE
With Pump Shop
Offering New & Used
Pipe, Equip. & Fittings
Employee Owned

SALES OFFICES

Wichita, KS 800-777-7672
Great Bend, KS 316-792-3130
Mob: 316-786-4255

New Office
Hugoton, KS 620-428-6604



(1) Murfin Drilling Company, Wichita (KS), has discovered oil deposits in the Topeka limestone member of the Shawnee Group at their Thornburg No. 1-6, spotted in approximately NE NW SW in section 6- T8s- R14W, in Osborne County. The 3,767-foot deep wildcat well establishes a new oilfield nearly two miles northwest of a second new recent oil discovery for Murfin in section 8. The No. 1-8 Ruthi, approximately NW NE SE, was drilled to a total depth of 3,650 feet in August this year and is giving up crude from both the Topeka and Lansing-Kansas City zones. Both fields remain unnamed at this time. Sites of the new discoveries lies between ten to eleven miles southwest of the town of Osborne, Kansas, northwest of the Kill Creek and Kill Creek Northwest oil fields.

(2) Pelican Hill Oil & Gas, San Clemente (CA.), is pumping an estimated 75+ barrels of oil per day from the Arbuckle formation at the No. 1-16 Nelson, located in approximately SW NE SE of section 16- T11s- R21W, in Trego County. The new unnamed field discovery has produced nearly 10,000 barrels of oil since March this year, according to State production reports. The well topped the Arbuckle formation at 3,885 (-1617) and is producing from an estimated 53 feet of open hole with total depth reaching 3,939 feet. Well site lies nearly one mile northwest of production in the Walz West (Lansing-Kansas City) oil field, or eight miles northeast of Ogallah, Kansas. Operator

has successfully confirmed the new field with the completion of several offsetting wells.

(3) Blake Exploration LLC, Bogue (KS), has successfully completed the No. 1 Berggren 'B' in Logan County for an initial potential of 50 barrels of oil and 10 barrels of water per day. The well is producing 34 degree gravity crude from two sets of perforations in the Lansing-Kansas City from 4,085 to 4,091 and 4,118 to 4,124 feet. Log top of the Lansing formation is called at 3,912 (-920). Total depth is 4,800 feet. The well started producing at the end September at site located in approximately SW NE SE in section 8- T13s- R33W, about four miles northeast of Russell Springs, Kansas. The new oil deposits were found nearly one mile west of LKC production in the Logansport field. The new field has not been named.

(4) Also in Logan County, Blake Exploration LLC has discovered new Morrow Sand pay at an infield wildcat discovery on the eastern side of the Smoky Valley Southeast (Lansing-Kansas City) oil field. Discovery was made in October this year at the No. 1 Riner-Kronberger well, spotted in the C W/2 SW SW SW of section 8- T14s- R32W, almost fifteen miles southeast of Russell Springs, Kansas. The well was bottomed at a depth of 4,525 feet by Murfin Drilling tools. Nearest known Morrow production in

the vicinity is found two and one-half miles to the southeast in the multipay Chalk Buttes field in section 15. The new field has not been named.

(5) SandRidge Exploration & Production LLC, Oklahoma City (OK), has completed its first horizontal well in Harper County for an undisclosed potential in the Mississippian formation. The No. 1-17H Bernice, surface location 200 ft. from south line and 1980 ft. from west line in section 17- T35s- R7W, was drilled to a True Vertical Depth of 4,856 feet and a True Measured Depth of 9,486 feet. Lateral-1 extended in a northerly direction to bottom hole location 1,720 ft. from south line and 1,980 ft. from west line in section 8. Production depth was from a True Vertical Depth from 4,836 to 4,856 feet. The wildcat pool opener found reserves six miles from Mississippian production in the Bouse field, and is about six miles east of Waldron, Kansas. The new field has not been named.



Abstract

Natural Gas in the Pre-Drake Era

Ray Sorenson

Oil and gas seeps were a commonly noted curiosity from the beginning of North American exploration and settlement, with hundreds of published references prior to 1859. The first seeps with economic applications were mineral springs associated with gas seeps rich in carbonic acid gas (CO₂) or sulphuretted hydrogen (H₂S). These were valued for medicinal properties, and were the basis for spas that were in operation before the 19th century.

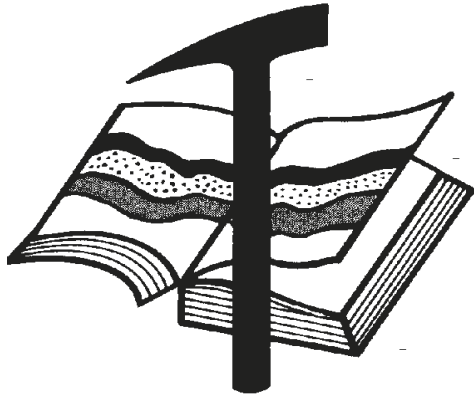
North American coal mining became common in the late 18th century and expanded rapidly in the 19th century. Carburetted hydrogen (CH₄), known to the miners as fire damp, was an important factor in coal mine operations due to its common occurrence and the danger from its explosive properties. A major market for the mined coal was the manufacture of gas for street lighting, a British invention adopted by most major U. S. cities prior to the Civil War, beginning with Baltimore in 1817. Although primitive by modern standards, storage facilities and pipeline systems for municipal distribution of gas were already in operation long before the petroleum industry became involved.

Carburetted hydrogen was known to occur both in coal and its associated bituminous shale; consequently seeps and bituminous shales were widely regarded as proximity indicators by coal prospectors. The New York State Geological Survey (1836-1842) documented numerous seeps in the western part of the state, but demonstrated that the bituminous shales sourcing them were too old to be associated with commercial coal deposits, and that exploratory coal pits near the seeps were a waste of time and money. In the process they provided the first systematic study of the Marcellus, Utica, and other shales targeted by modern shale gas drilling ventures.

Hand dug gas wells at Fredonia, New York were used for commercial lighting and heating as early as 1821. Other developments to exploit shallow shale gas along the Lake Erie shoreline included gas illumination of the lighthouse at Barcelona, New York in 1830. Gas was found in water wells at Findlay, Ohio in 1836 and utilized for domestic heating in 1838, a development that foretold the location of Lima-Indiana, the 2nd giant oil and gas field to be discovered in the United States. In the salt manufacturing industry of the greater Ohio River valley in Ohio, (West) Virginia, and Pennsylvania, natural gas which accompanied the produced brine assisted in lifting it to the surface and was burned as a fuel for the evaporation process as early as 1840.

Raymond P. Sorenson
1912 S. Cheyenne Ave.
Tulsa, OK 74119
sorensonrk@sbcglobal.net
918-592-0072 home
713-410-3998 cell

Note: Ray Sorenson will be our guest speaker on Tuesday, January 24, 2012, KGS Technical Talk



Kansas Geological Foundation

Web Site: www.kgfoundation.org

**212 North Market
Wichita, Kansas 67202**

A not-for-profit educational and scientific corporation

GOALS:

- promote geology and earth science
- preserve geological records
- establish memorials and endowments
- support field trips and seminars
- financial aid and grants to students

PLEASE HELP SUPPORT THE FOUNDATION

Kansas Geological Foundation Services

The Kansas Geological Foundation provides the following services as a part of the organization's commitment to educate the public regarding earth science.

Speaker's Bureau

A list of speakers available to talk about various aspects of geology may be obtained by contacting Janice Bright at the KGS Library, 265-8676. This service is free to the public.

DVD/Videotape Library

The KGF maintains a DVD & videotape library focused primarily on the various fields of earth science. These tapes may be checked out without charge by the public. To obtain a list of tapes, please contact the KGS Library, 212 N. Market, Ste. 100, Wichita, KS 67202, or call Janice Bright at 265-8676.

The Kansas Geological Foundation was founded in March, 1989 as a not-for-profit corporation under the guidelines of section 501(c)(3) of the tax code to provide individuals and corporations the opportunity to further the science of geology. It is dedicated to providing charitable, scientific, literary and educational opportunities in the field of geology for the professional geologist as well as the general public.

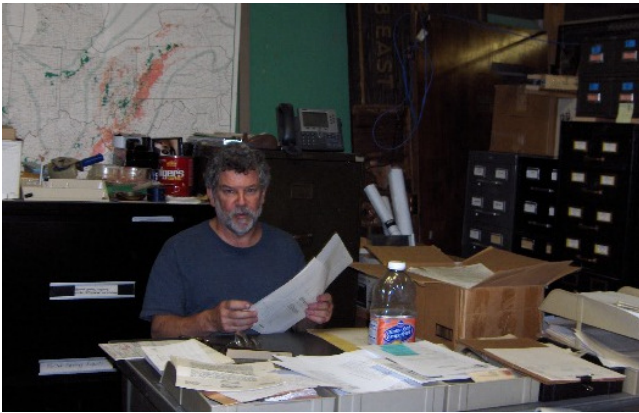
KGF can receive in-kind donations through which the donor may receive a tax deduction. Of equal importance, the KGF provides the financial resources to sort, process and file this data at the KGS library. If you have a donation to make, please contact the KGF at 265-8676.

Your tax-deductible membership donation helps to defray the cost of processing donations and to support public education programs about the science of geology. Annual membership begins at \$50.00 per year. Donations of \$100.00 or more are encouraged through the following clubs:

Century Club	\$ 100 to \$ 499
\$500 Club	\$ 500 to \$ 999
Millennium Club	\$1000 to \$5000
President's Club	\$5000 and over

Integration Project Update

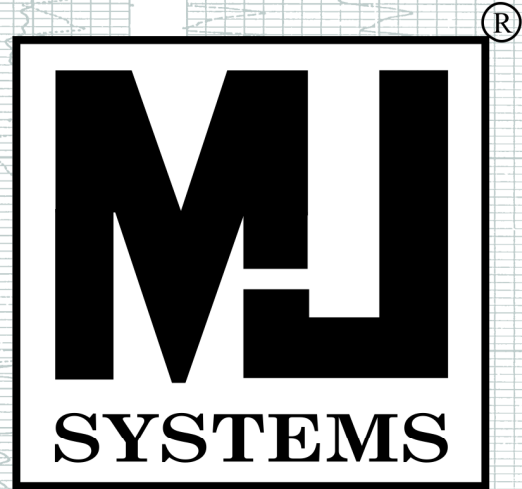
- ◆ *In 2011, approximately 5,725 new logs were added to the Society database from donated data.*
- ◆ *305 logs were forwarded for rescan to replace bad digital images.*
- ◆ *Stanchions have been built in the basement to house the drill time, making room in the library for more logs and plotted geo reports.*
- ◆ *We have two WSU geology students working on the integration project and one remote worker, comparing new documents to the database. This is in addition to Ted Jochems who heads up this project and volunteers much of his time. Thank you Ted!*



All of this work is enhancing the files in the library so you can access the data you need. That one little piece of information may be in the basement. Help us get it up in the files for your use by giving to the

***Kansas Geological Foundation's
Accelerated Integration Project***

Every little bit helps!



Logs Since 1971

www.mjlogs.com

6 MILLION LOGS

DEPTH REGISTERED

***INTERNET
DOWNLOADS***

***ONLINE
SEARCH***

SEARCH AND FILTER BY DEPTH

OWN THE LOGS

LogSleuth Software

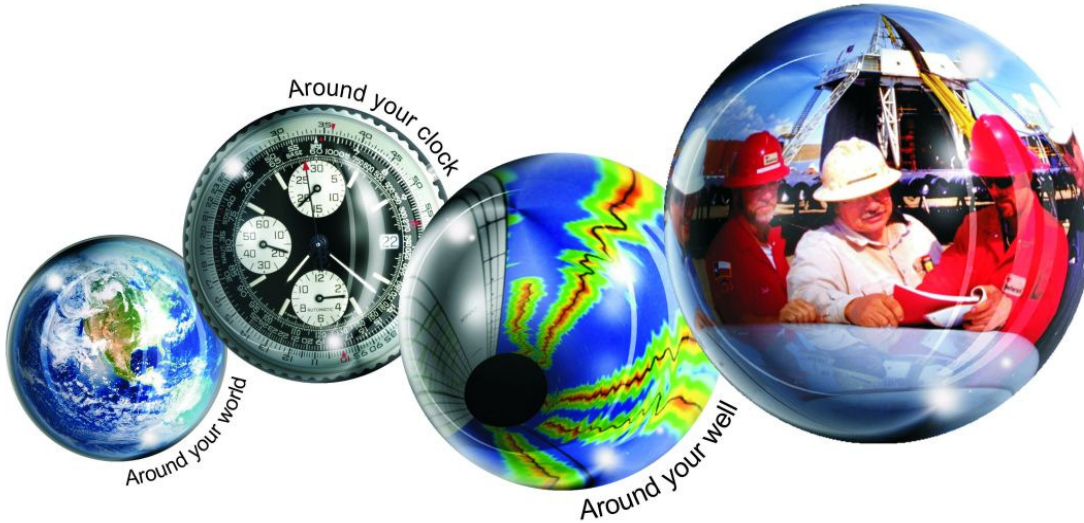
CLUB WEB

WEB SITE CATALOGUE

1-800-310-6451

Kansas Geological Foundation Memorials

KGS Member	Date Deceased	Memorial Established	KGS Member	Date Deceased	Memorial Established
Dan Bowles	09/89	1990	Jerold E. Jesperson	06/01	2001
John Brewer	10/89	1990	William A. Sladek	06/01	2001
George Bruce	08/89	1990	Harlan B. Dixon	06/01	2001
Robert Gebhart	01/90	1990	Edward B. Donnelly	08/01	2001
Ray Anderson, Jr.	11/90	1990	Richard P. Nixon	02/02	2002
Harold McNeil	03/91	1991	Robert W. Frensley	12/01	2002
Millard W. Smith	08/91	1991	Gerald W. Zorger	01/02	2002
Clinton Engstrand	09/91	1991	Don L. Calvin	03/02	2002
M.F. "Ted" Bear	10/91	1991	Claud Sheats	02/02	2002
James & Kathryn Gould	11/91	1991	Merle Britting	2002	2002
E. Gail Carpenter	06/91	1993	Harold Trapp	11/02	2002
Benton Brooks	09/92	1992	Donald M. Brown	11/02	2003
Robert C. Armstrong	01/93	1993	Elwyn Nagel	03/03	2003
Nancy Lorenz	02/93	1993	Robert Noll	09/03	2003
Norman R. Stewart	07/93	1993	Benny Singleton	09/03	2003
Robert W. Watchous	12/93	1993	Jay Dirks	2003	2003
J. George Klein	07/94	1994	J. Mark Richardson	02/04	2004
Harold C.J. Terhune	01/95	1995	John "Jack" Barwick	02/01	2004
Carl Todd	01/95	1995	Richard Roby	03/04	2004
Don R. Pate	03/95	1995	Ruth Bell Steinberg	2004	2004
R. James Gear	05/95	1995	Gordon Keen	03/04	2004
Vernon Hess	06/95	1995	Lloyd Tarrant	05/04	2004
E. K. Edmiston	06/95	1995	Robert J. "Rob" Dietterich	08/96	2004
Jack Rine	07/95	1995	Mervyn Mace	12/04	2004
Lee Cornell	08/95	1995	Donald Hoy Smith	04/05	2005
John Graves	10/95	1995	Richard M. Foley	06/05	2005
Wilson Rains	10/95	1995	Wayne Brinegar	06/05	2005
Heber Beardmore, Jr.	09/96	1996	Charles B. Moore	09/96	2005
Elmer "Lucky" Opfer	12/96	1996	Jack Heathman	05/06	2006
Raymond M. Goodin	01/97	1997	Charles Kaiser	09/06	2006
Donald F. Moore	10/92	1997	Rod Sweetman	08/06	2006
Gerald J. Kathol	03/97	1997	Karl Becker	10/06	2006
James D. Davies	08/88	1997	Frank Hamlin	10/06	2006
R. Kenneth Smith	04/97	1997	Marvin Douglas	12/06	2006
Robert L. Dilts	05/97	1997	Robert W. Hammond	04/07	2007
Delmer L. Powers	06/72	1997	Eldon Frazey	04/07	2007
Gene Falkowski	11/97	1997	Pete Amstutz	05/07	2007
Arthur (Bill) Jacques	01/98	1998	Charles Spradlin	05/07	2007
Bus Woods	01/98	1998	Donald R. "Bob" Douglass	09/07	2007
Frank M. Brooks	03/98	1998	Vincent Hiebsch	11/07	2007
Robert F. Walters	04/98	1998	Glen C. Thrasher	03/08	2008
Stephen Powell	04/98	1998	Peg Walters	06/08	2008
Deane Jirrels	05/98	1998	Theodore "Ted" Sandberg	07/08	2008
William G. Iversen	07/98	1998	James Ralstin	11/08	2008
Ann E. Watchous	08/98	1998	Earl Brandt	04/09	2009
W.R. "Bill" Murfin	09/98	1998	Walter DeLozier	05/09	2009
Donald L. Hellar	11/98	1998	Donald D. Strong	01/10	2010
Joseph E. Rakaskas	01/99	1999	John Stone	02/10	2010
Charles W. Steincamp	02/99	1999	Craig Caulk	03/10	2010
Robert and Betty Glover	10/96	1998	Joseph E. Moreland, Jr.	03/10	2010
Howard E. Schwerdtfeger	11/98	1999	Gene Garmon	03/10	2010
W. W. "Brick" Wakefield	03/99	1999	James F. Dilts	05/10	2010
V. Richard Hoover	01/00	2000	Jerry Pike	05/10	2010
Warren E. Tomlinson	01/00	2000	Donald Hollar	06/10	2010
James A. Morris	01/00	2000	Delbert Costa	08/10	2010
Eric H. Jager	03/00	2000	John Tanner	08/10	2010
Kenneth W. Johnson	03/00	2000	William (Bill) Owen	09/10	2010
Dean C. Schaake	03/00	2000	Harold (Hal) Brown	10/10	2010
Fred S. Lillibridge	05/00	2000	Edmund G. Lorenz	11/10	2010
Jerry A. Langrehr	07/00	2000	Thomas E. Black	05/11	2011
Clark A. Roach	07/00	2000	Wayne E. Walcher	07/11	2011
Floyd W. "Bud" Mallonee	10/00	2000	Henry F. Filson	07/11	2011
Ralph W. Ruuwe	09/00	2000	Thomas Ray	07/11	2011
Robert L. Slamal	02/01	2001			



All Around You

Weatherford has always been driven by your needs.

Now, with the addition of Precision Energy Services we're continuing to build a world of skills, services and technologies that revolve – and evolve – around you.

The result?

An expanded global network of 25,000 people, 730 service bases and 87 manufacturing facilities in 100 countries.

This increased local knowledge and service is there to support you anywhere, anytime. From midday in the Middle East to midnight in the middle of nowhere.

And with greatly strengthened capabilities in the critical evaluation skills of directional drilling and wireline logging, we can do even more to improve the profitability and productivity of your wells.

To see how our sphere of services can work for you, visit www.weatherford.com or contact either your Weatherford or former Precision Energy Services representative.

Drilling | Evaluation | Completion | Production | Intervention

© 2006 Weatherford International Ltd. All rights reserved. Incorporates proprietary and patented Weatherford technology.


CHANGE SERVICE REQUESTED

KGS BULLETIN
 January—February 2012

January 2012

Sun	Mon	Tue	Wed	Thu	Fri	Sat
1	2 Library Closed	3 Tech Talk	4	5	6	7
8	9	10 KGS Brd	11	12	13	14
Logging Workshop at WSU—John Doveton						
15	16	17 Tech Talk	18	19	20 KGS Banquet	21
22	23	24 Tech Talk	25	26	27	28
29	30	31 Tech Talk				

February 2012

Sun	Mon	Tue	Wed	Thu	Fri	Sat
			1	2	3	4
5	6	7 Tech Talk	8	9	10	11
12	13	14 KGS Board Mtg. 	15	16	17 Tech Talk	18
19	20	21 Tech Talk	22	23	24	25
26	27	28 Tech Talk	29			